

Tualatin SWCD Programs



Rural



**Stream
Enhancement**



Urban



Invasive Species



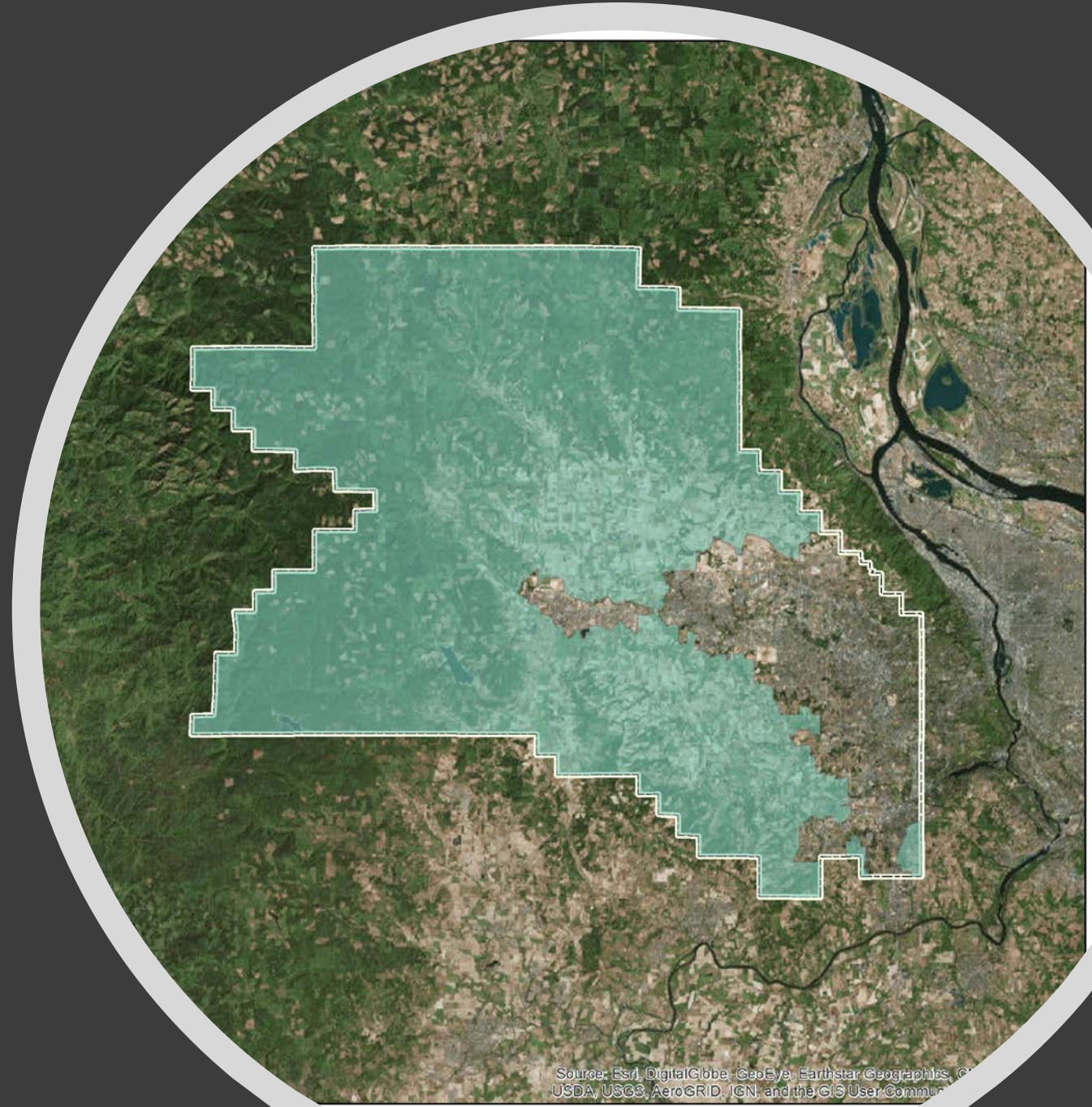
Forest



**Conservation
Education**



Rural Conservation Program



Source: Esri, DigitalGlobe, GeoEye, Earthstar Geographics, CNR, USDA, USGS, AeroGRID, IGN, and the GIS User Community

Rural Program Vision

WE ASSIST landowners and operators to decrease soil erosion, improve water use, and manage pests and nutrients to support healthy and economically viable working lands.



PC: Alex Pajunas



PC: TSWCD



PC: Alex Pajunas



Rural Program Elements

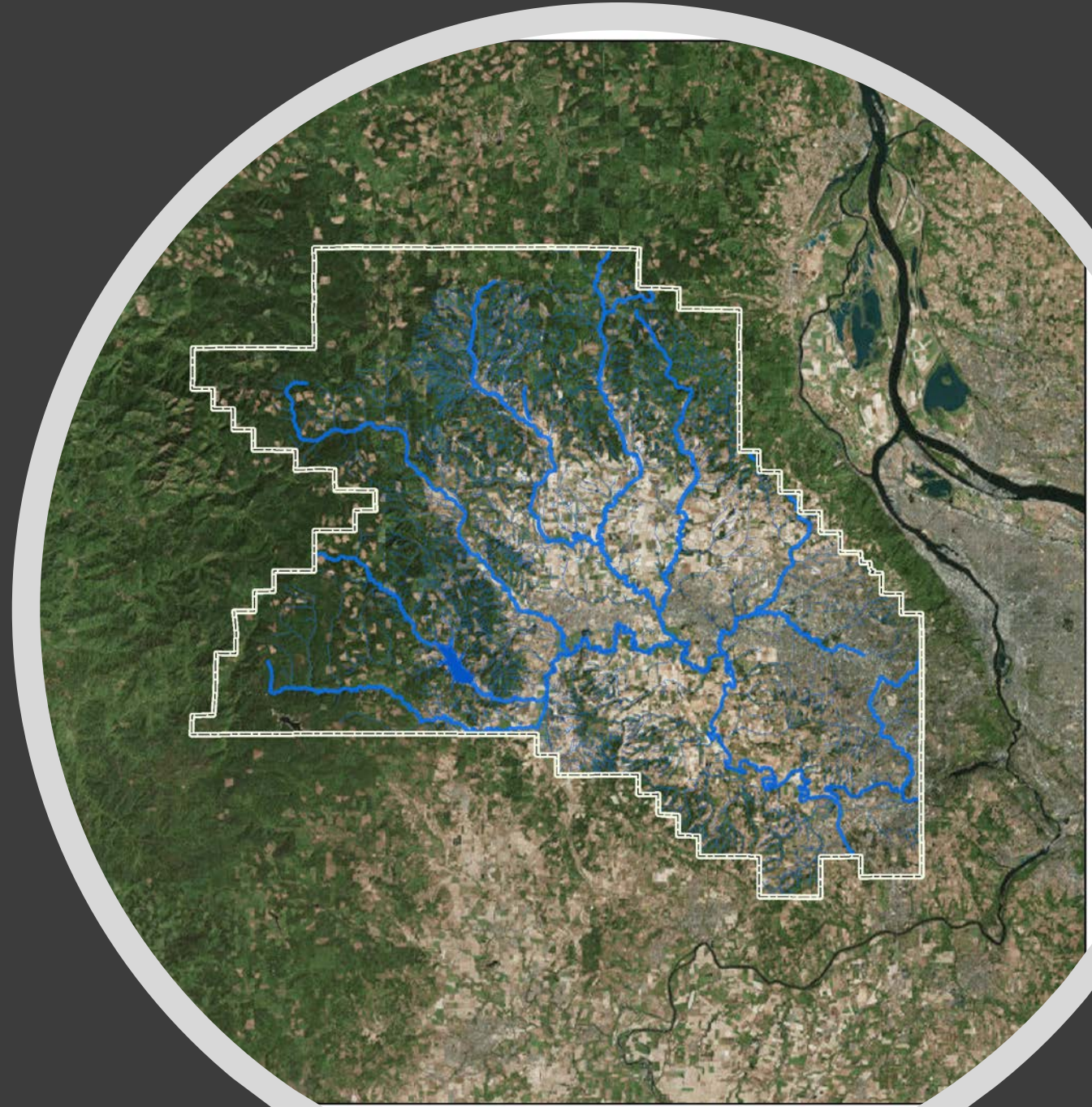
- Conservation planning and technical assistance
 - Nutrient and pesticide reduction
 - Erosion control
 - Irrigation efficiency
- Ag Water Quality Management Area Plan
- Habitat conservation
- Conservation easements



PC: TSWCD



Stream Enhancement Program



Stream Program Vision

WE OFFER incentives to establish native trees and shrubs along streams to maintain clean water and healthy soil for humans and wildlife.



PC: TSWCD



PC: TSWCD



Stream Program Goals

- Improve water quality and quantity in Tualatin basin
- Increase wildlife habitat
- Provide voluntary conservation assistance for rural private landowners



PC: TSWCD



PC: Creative Commons



Stream Program Elements

- Financial incentives for establishing trees and shrubs along streams on private land
- Conservation planning and project management
- Long-term easement options for protecting investment
- Technical assistance with streamside concerns

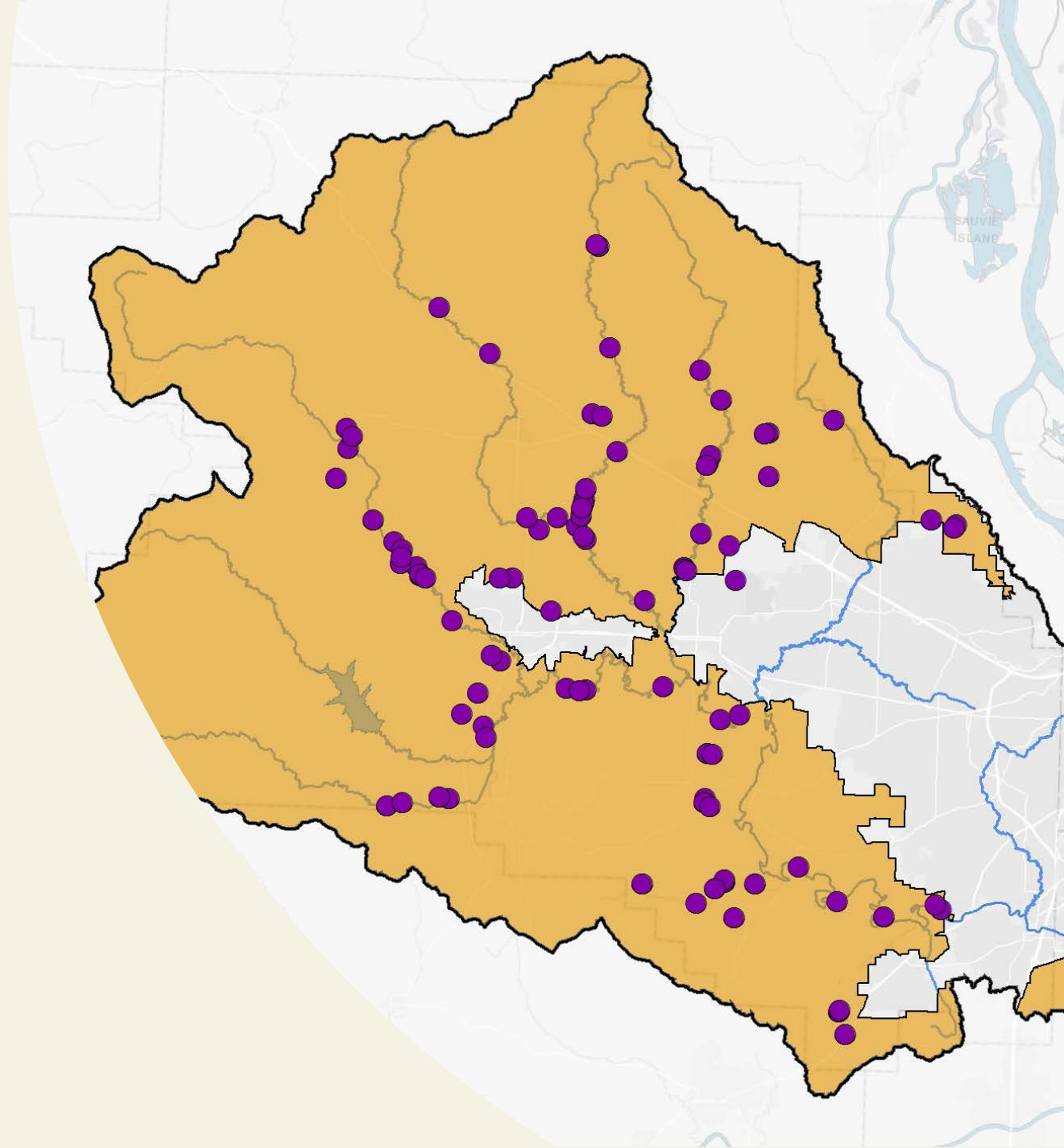


PC: TSWCD

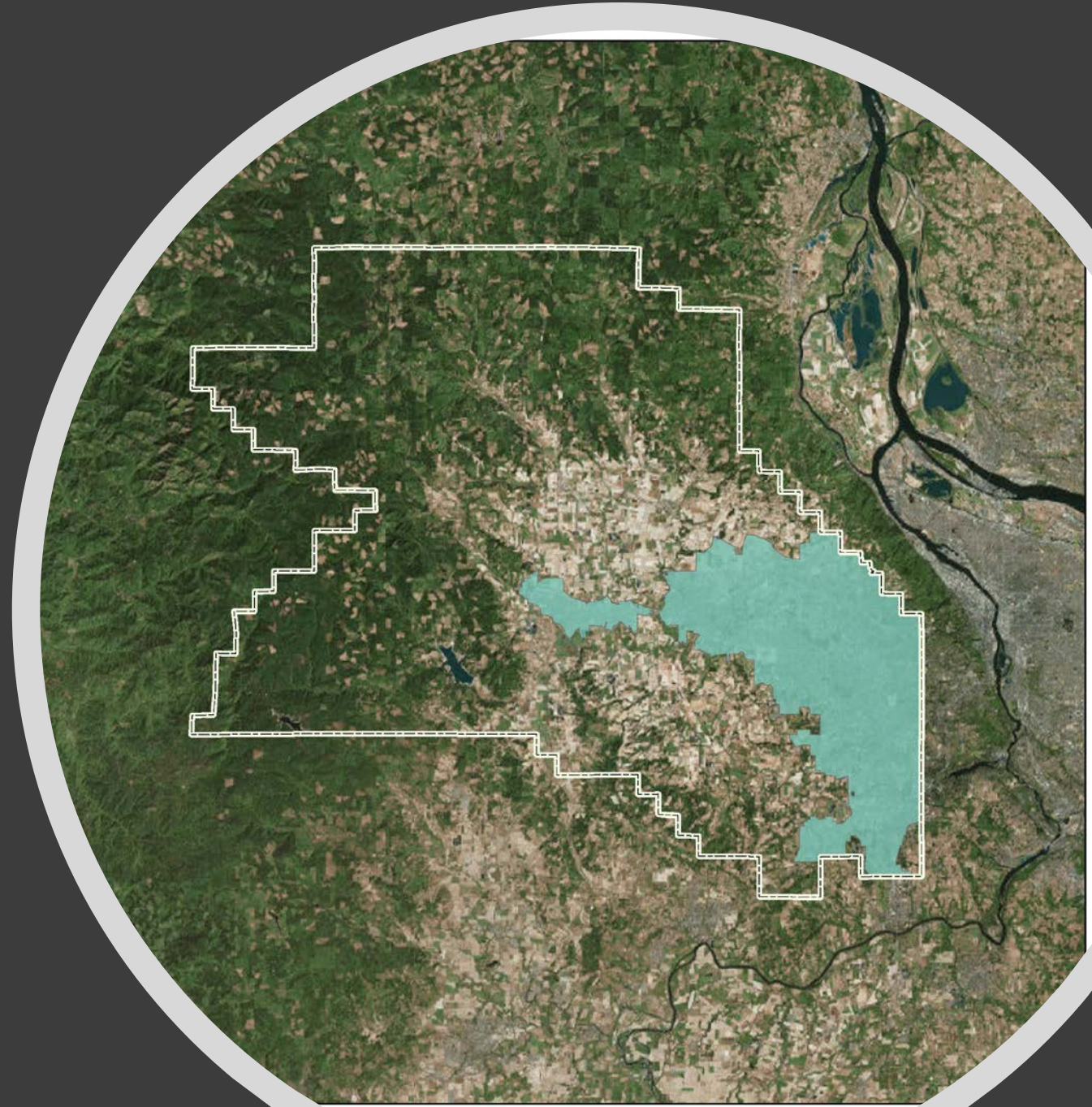


Stream Program Accomplishments

- 80 active projects
- 753 actively managed acres
- 20 term easements



Urban Conservation Program



Urban Program Vision

WE EMPOWER residents to improve backyard habitat, grow sustainable gardens, and use water wisely to maintain a healthy community.



PC: Alex Pajunas



PC: TSWCD

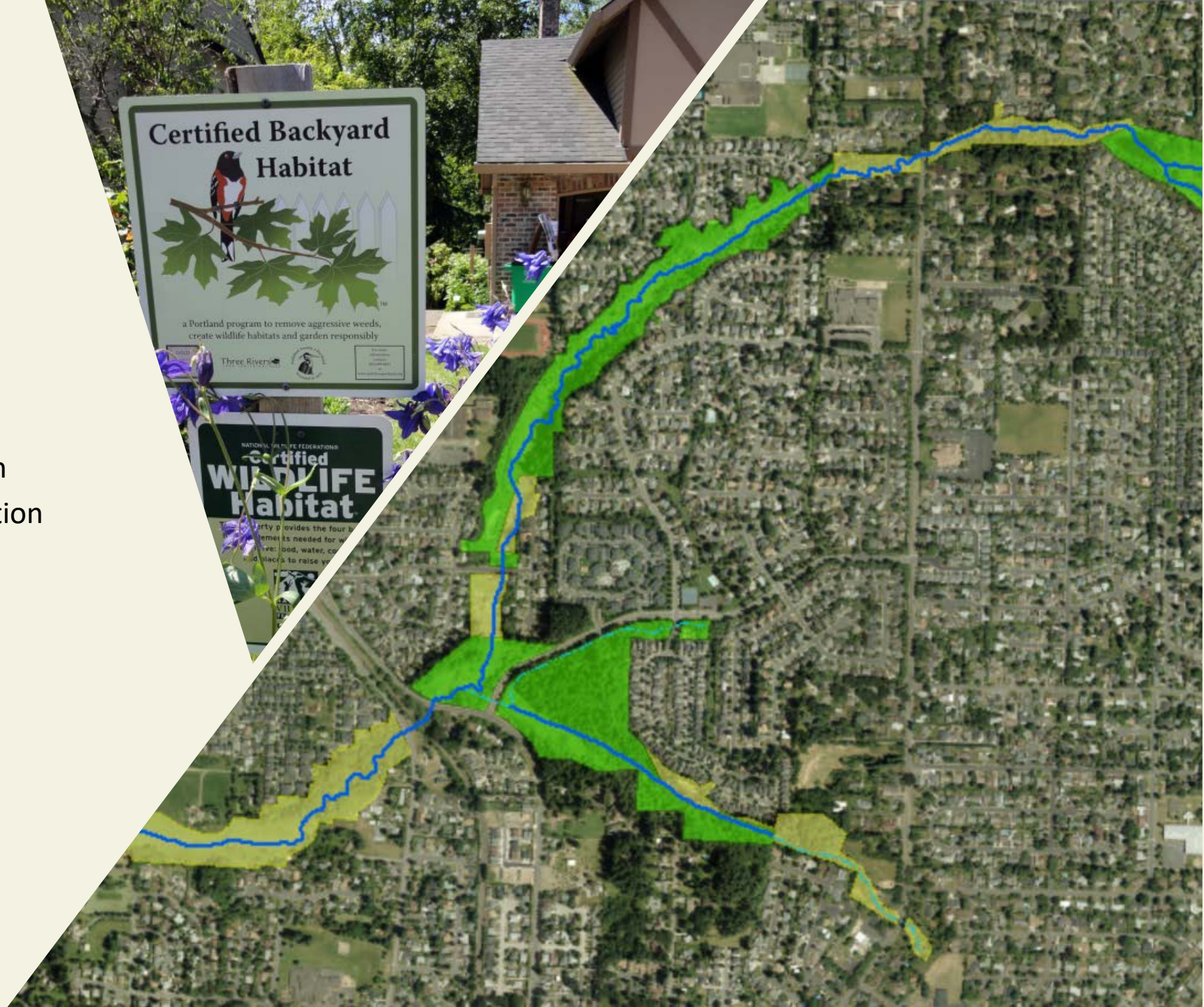


PC: TSWCD



Urban Program Highlights

- Planned Backyard Habitat Certification Program Expansion
- Urban Stream Corridor Restoration
- Education Opportunities
 - Stormwater management
 - Residential Naturescaping
 - Soil School
- Partnership development



Invasive Species Program Vision

WE CONTROL and survey target species, increase public awareness, and collaborate with partners and residents to prevent the spread of invasive species.

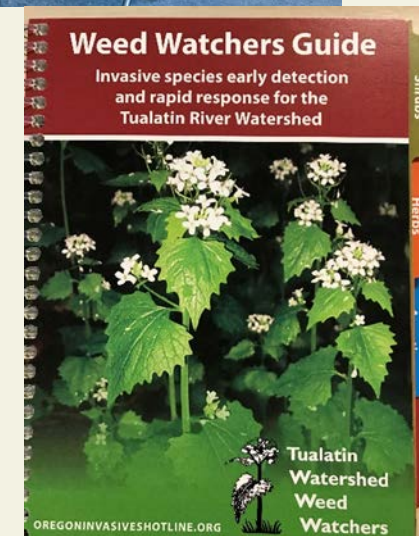


Invasive Species Program Assistance

- Technical assistance (informational) to control common weeds
- On-the-ground/financial assistance to survey and control EDRR weeds
- Tool rentals for landowners (e.g., weed wrenches)
- Weed Watcher Workshops for Washington County residents and city, county or state agencies



PC: TSWCD



Priority Weeds

Primary Species (Report & Control Anywhere)

- Garlic mustard
- Knotweed species
- Giant hogweed
- Purple loosestrife
- Spurge laurel
- Oblong spurge
- False brome
- Parrot feather
- Orange hawkweed
- Goat's rue
- Yellow floating heart



PC: TSWCD

Secondary Species (Report & Control in Natural Area or Park)

- Italian arum
- Policeman's helmet
- Yellow archangel
- Meadow knapweed
- Lesser celandine
- Drooping sedge
- Pokeweed
- Japanese butterbur



Currently, the bulk of our budget is allocated to control these 4 weeds



Conservation Education Program Vision

WE EDUCATE the public on local natural resource concerns, teach best management practices to manage these resources, and provide conservation tools to create a healthy and livable community.



Photo: April Olbrich



Photo: TSWCD



Conservation Education Program Elements

- Community outreach
- Workshops & events
- District publications
- Educational resources
- Agriculture in the Classroom



Publications & Educational Resources

We create informational materials to promote our natural resource programs. We are developing educational resources for natural resource topics that residents have expressed interest/concern about.



Education topics that we are currently focusing on:

- Beaver management
- Streambank erosion
- Pesticide information; non-pesticide options
- Weed management
- Agricultural viability
- Public agency roles



TWIG Program

(Tualatin Watershed Improvement Grant)

TSWCD will help you with...

- Conservation-related events
- Habitat for pollinators or other beneficial insects
- Native and/or water-wise landscaping
- School and community gardens
- Rainwater management



PC: Creative Commons

The Tualatin Soil and Water Conservation District offers small grants to fund your conservation-related project or event. Grant guidelines and application form are available on our website.

Grant Awards

Grants awarded monthly up to \$5,000.

Applications due by the 10th of each month.

For larger grant funding ask about our T.R.E.E. Grant Program.



TREE Grant Program

(Tualatin River Environmental Enhancement Grant)

TSWCD will help non-profits and other organizations address the following conservation objectives:

- Habitat conservation or restoration projects
- Habitat for pollinators or other beneficial insects
- Water quality improvement projects
- Water conservation and stormwater management
- Sustainable agriculture



The Tualatin Soil and Water Conservation District offers grants to fund conservation-related projects. Grant guidelines and application form are available on our website.

Grant Awards

Grants awarded bi-annually and range from \$5,000 - \$100,000.
Application deadlines: July 1st and December 15th.



Habitat Conservation Program

TSWCD will help eligible landowners restore priority fish and Wildlife habitat on their property. Priority habitats include:

- **Oak and Prairie**
- **Wetland**
- **Instream fish habitat**
- **Streamside revegetation**
- **Upland forest**

