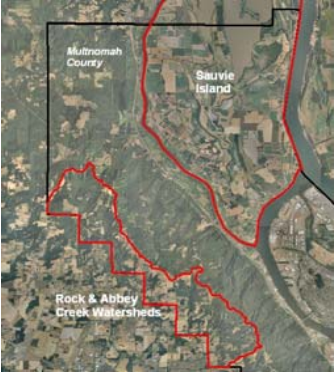


Healthy Streams is a new program of the West Multnomah Soil & Water Conservation District.

Over \$50,000 is dedicated to help improve degraded stream banks and riparian areas.



Who is eligible?



Rural landowners with streams that need native riparian vegetation on Sauvie Island and in the upper Rock and Abbey Creek watersheds in the West Hills.

Farms

If you have a farm on Sauvie Island, we will control nuisance weeds and install a buffer of vegetation along your canal. We can also help you comply with state water quality rules.

If you have marginal pasture or open areas, we can help design and pay for fencing to keep livestock away from unstable stream banks or canals and build alternate livestock watering facilities.

Forests

If you live in our priority area in the West Hills, we will combat your invasive plants and replace them with beautiful native trees and shrubs. We'll also help you manage your woods and improve stream banks.

Why Restore Streamside areas?

♣ Invasive weeds are a nuisance. They crowd out desirable plants and crops, contribute to erosion, and can even lower your property value.



♣ Native plants fruit and flower when native wildlife need the food source, and they provide better cover and nesting habitat.

♣ Native plants better filter excess nutrients from cropland, road run-off, and animal waste.

♣ Native plants trap sediment before it reaches streams and suffocates fish and other aquatic life.

♣ The shade from native trees and shrubs keep streams cool for native fish and wildlife.



How we help:

At no cost to you, we visit your property when it's convenient to assess conditions and objectives.

At no cost to you, we provide project planning and design for your property.

At no cost to you, we provide technical expertise to control invasive weeds and select the right plants instead.

At little cost to you, we clear, plant and help you maintain the streamside for 5 years.



How you benefit:

∞ Enhance wildlife habitat

∞ Improve your aesthetic experience

∞ Protect existing trees from invasive weeds, such as ivy, clematis, morning glory and blackberry

∞ Learn more about your property

∞ Improve pollinator habitat for your farm and neighborhood

∞ Define and meet your land management objectives

∞ Protect your livestock from unstable stream banks

∞ Improve your stream's water quality for you and those downstream



Are your streamside areas covered with blackberry or other weeds?

Would you like to see more wildlife around the stream?

Are your stream banks getting steeper and deeper?

Do you want to improve water quality?



We can help you with all of these things. Our services are free and we're only a phone call or email away!

When to apply?

Call soon to discuss eligibility and project details! If we can enroll you by early summer, we can start controlling weeds in the fall.

Contact Kammy Kern-Korot at 503.238.4775, x108 and take a look at our Healthy Streams web page at www.wmswcd.org.



Who We Are

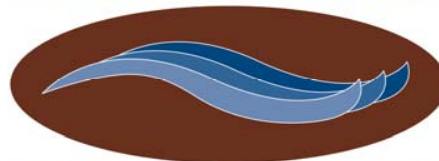
Soil & Water Conservation Districts (SWCDs) were formed in response to the massive soil erosion crisis of the Dust Bowl in the 1930s which undermined the value and productivity of agricultural lands.

Congress realized that only active, voluntary support from landowners would guarantee the success of conservation work on private lands.

Oregon responded by creating districts that work hand-in-hand with private landowners, as well as state, tribal and federal agencies and local organizations to meet the needs of the landowner and to achieve local, statewide and regional conservation objectives.

SWCDs are governed by a locally elected board of directors and are accountable to citizens.

WEST MULTNOMAH

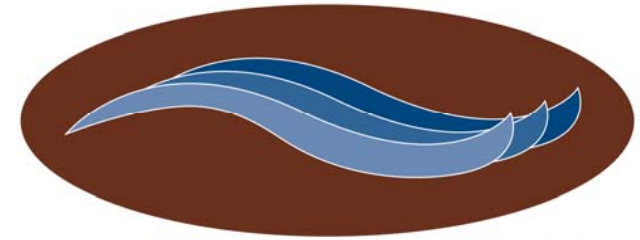


SOIL & WATER CONSERVATION DISTRICT

2701 NW Vaughn St, Suite 450
Portland, OR 97210
www.wmswcd.org

Phone: 503.238.4775
Fax: 503.326.3942
Email: info@wmswcd.org

WEST MULTNOMAH



SOIL & WATER CONSERVATION DISTRICT

*Join your neighbors
in the quest for
healthy streams!*



Tel: 503.238.4775